



CHERIE  
BERGER  
TEAM

April 2022

# Martinsville Market Insights

CHERIE BERGER TEAM

# Martinsville

APRIL 2022

## Market Profile & Trends Overview

The table belows shows data & statistics for April 2022 (CM), and the percentage difference of these metrics compared to data from last month (LM), the last three months (L3M), the same month last year (PYM), the entire last year (LY), prior year (PY), year-to-date (YTD), and the prior year-to-date (PYTD).

		CM	LM	L3M	PYM	LY	PY	YTD	PYTD
Inventory	# OF PROPERTIES	7	0%	62%	0%	1%	-68%	-	-
	MEDIAN PRICE	\$859,900	-25%	-20%	56%	29%	39%	-	-
	AVERAGE PRICE	\$1,042,257	2%	-3%	51%	37%	40%	-	-
	PRICE PER SQFT	\$319	12%	3%	35%	24%	40%	-	-
	MONTHS OF SUPPLY	7.0	0%	140%	200%	-51%	-15%	-	-
New Listings	# OF PROPERTIES	5	-17%	36%	-44%	-5%	-33%	16	-54.3%
	MEDIAN PRICE	\$859,900	-27%	46%	56%	47%	32%	\$784,450	31.0%
	AVERAGE PRICE	\$1,081,560	-2%	94%	80%	70%	58%	\$929,419	29.9%
	PRICE PER SQFT	\$331	26%	86%	0%	86%	95%	\$287	34.7%
Sales	# OF PROPERTIES	1	0%	-67%	-67%	-81%	-79%	10	0.0%
	MEDIAN PRICE	\$500,000	-23%	-14%	-9%	-26%	-13%	\$590,000	6.8%
	AVERAGE PRICE	\$500,000	-23%	-17%	-21%	-30%	-15%	\$601,000	-0.2%
	PRICE PER SQFT	\$0	0%	0%	0%	0%	0%	\$315	48.6%
	SALE-TO-LIST RATIO	91.1%	-18.2%	-10%	-8.1%	-10.4%	-5.6%	97.8%	3.7%

© 2022. Based on information from Garden State MLS, LLC for the period of January 2018 through April 2022. Due to MLS reporting methods and allowable reporting policy, this data is only informational and may not be completely accurate. Data maintained by the MLS may not reflect all real estate activity in the market.

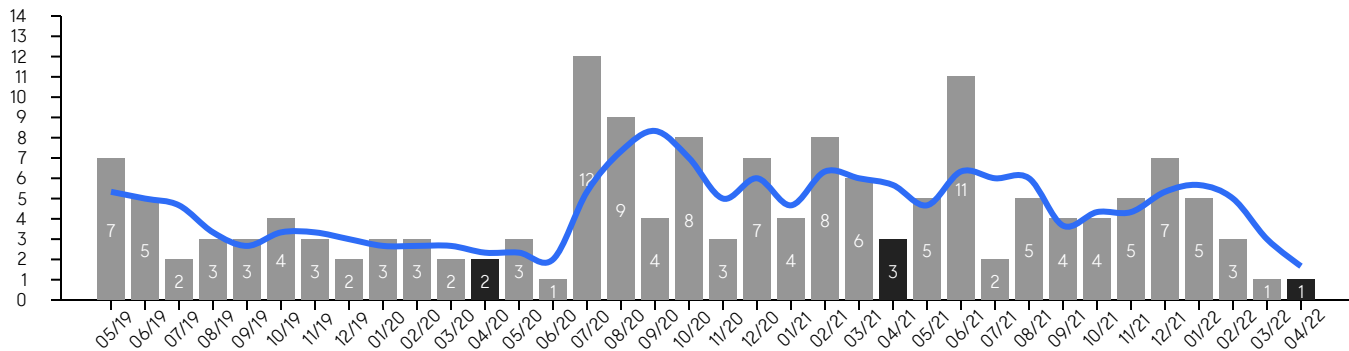
# Martinsville

APRIL 2022

## Property Sales

There were 1 sales in April 2022, a change of -67% from 3 in April 2021 and 0% from the 1 sales last month. Compared to April 2020 and 2021, sales were at their lowest level. There have been 10 year-to-date (YTD) sales, which is 0.0% higher than last year's year-to-date sales of 10.

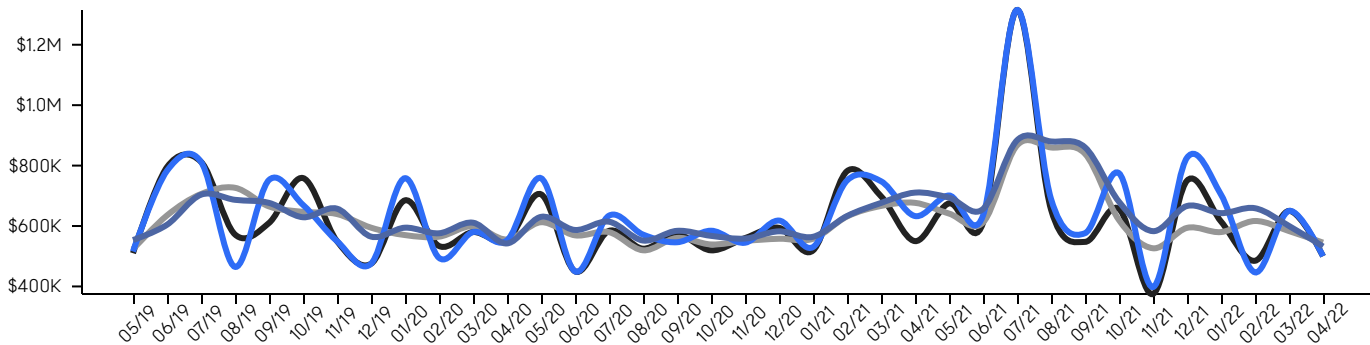
■ 3-Month Average



## Property Prices

The median sales price in April 2022 was \$500,000, a change of -9% from \$550,000 in April 2021, and a change of -23% from \$650,000 last month. The average sales price in April 2022 was \$500,000, a change of -21% from in April 2021, and a change of -23% from last month, and was at its lowest level compared to 2021 and 2020.

■ Median    ■ Median (3-Month)    ■ Average    ■ Average (3-Month)



© 2022. Based on information from Garden State MLS, LLC for the period of January 2018 through April 2022. Due to MLS reporting methods and allowable reporting policy, this data is only informational and may not be completely accurate. Data maintained by the MLS may not reflect all real estate activity in the market.

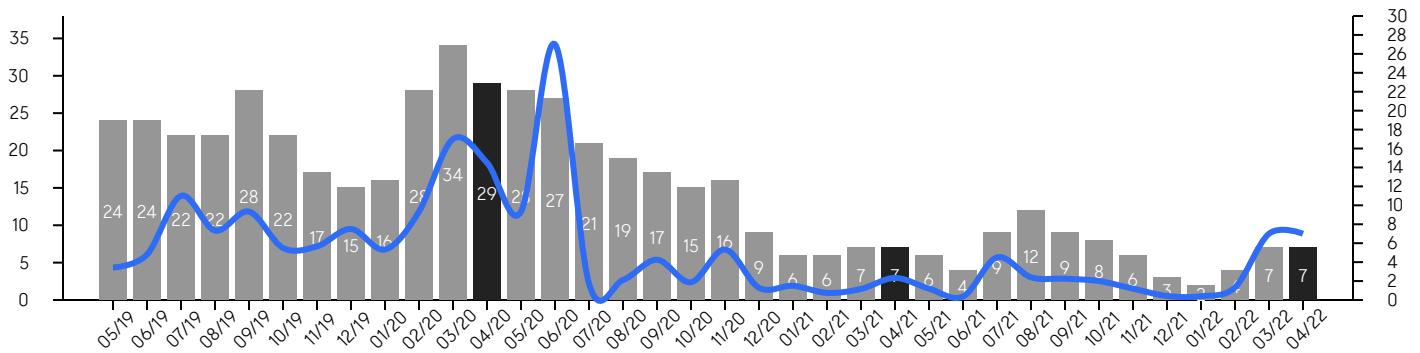
# Martinsville

APRIL 2022

## Inventory & MSI

The total inventory of properties available for sale as of April 2022 was 7, a difference of 0% from last month, and 0% from 7 in April 2021, and was at a similar level compared to 2021 and 2020. The months of supply inventory (MSI) was at 7.0 months, a similar level compared to 2021 and 2020. A comparatively lower MSI benefits sellers, while a higher MSI benefits buyers.

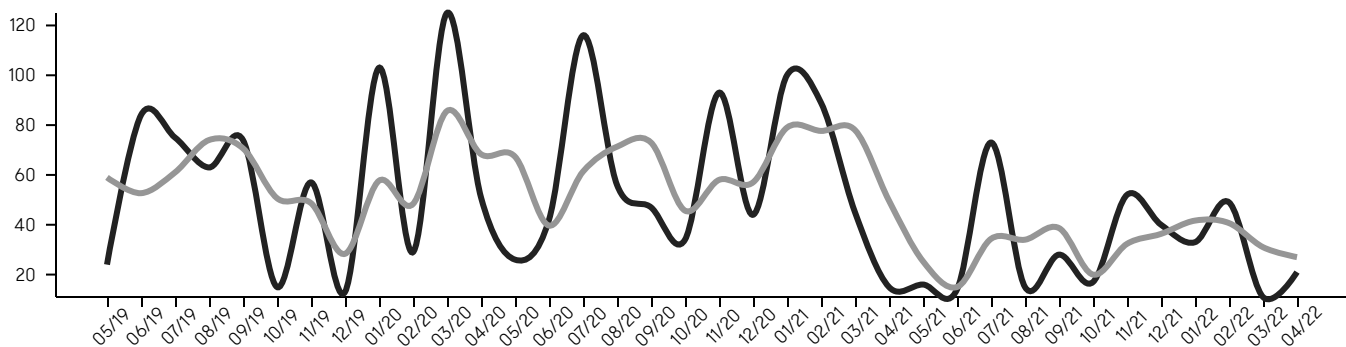
■ MSI



## Market Time

The average days on market (DOM) shows the number of days the average property is on the market before selling. An upward trend tends to indicate a move towards a buyer's market, while a downward trend tends to indicate a move to a seller's market. The DOM for April 2022 was 21, a change of 91% from 11 days last month, and 40% from 15 days in April 2021, and was at its lowest level compared to 2021 and 2020.

■ Average      ■ Average (3-Month)



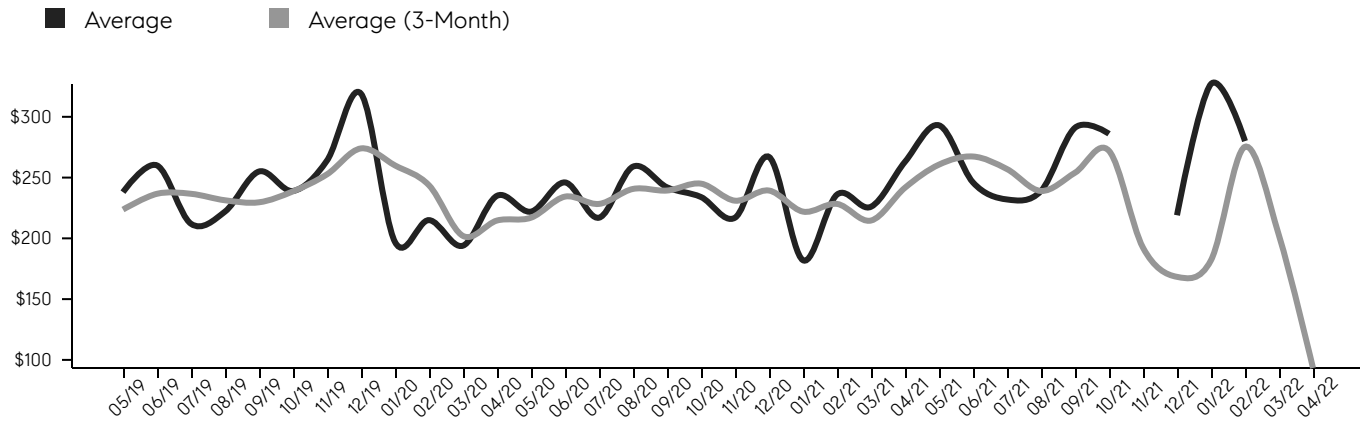
© 2022. Based on information from Garden State MLS, LLC for the period of January 2018 through April 2022. Due to MLS reporting methods and allowable reporting policy, this data is only informational and may not be completely accurate. Data maintained by the MLS may not reflect all real estate activity in the market.

# Martinsville

APRIL 2022

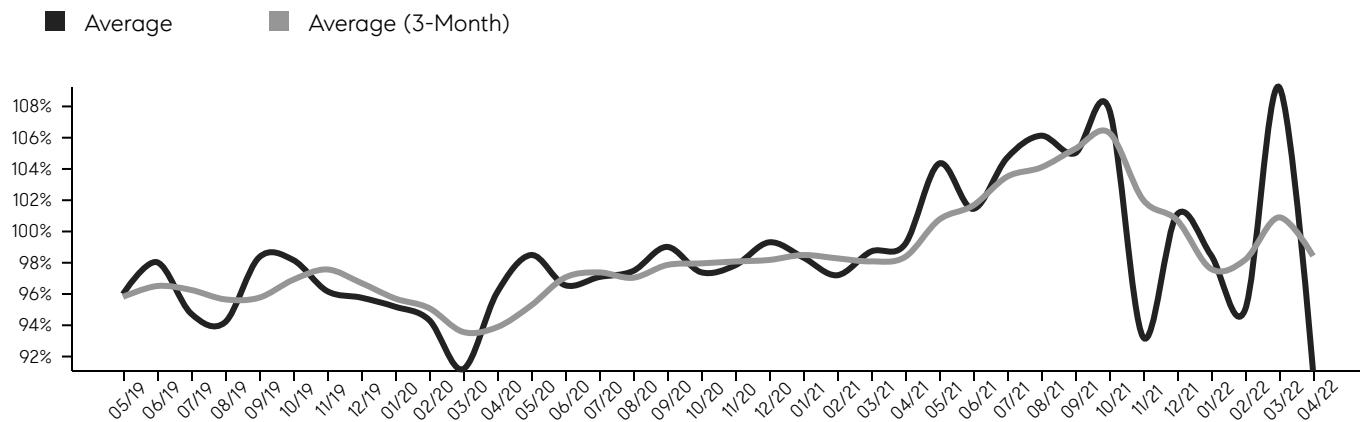
## Selling Price Per Square Foot

The selling price per square foot (PPSF) is a great indicator for the direction of property values. Since median & average sales prices can be impacted by the "mix" of high or low end properties in the market, the selling price per square foot is a more normalized indicator on the direction of property values.



## Selling Price vs. Listing Price

The selling price vs. listing price reveals the average amount that sellers are agreeing to come down from their list price. The lower the ratio is below 100%, the more of a buyer's market exists, while a ratio at or above 100% indicates more of a seller's market. The April 2022 selling price vs. listing price ratio was 91.1%, compared to 109.2% last month, and 99.2% in April 2021.



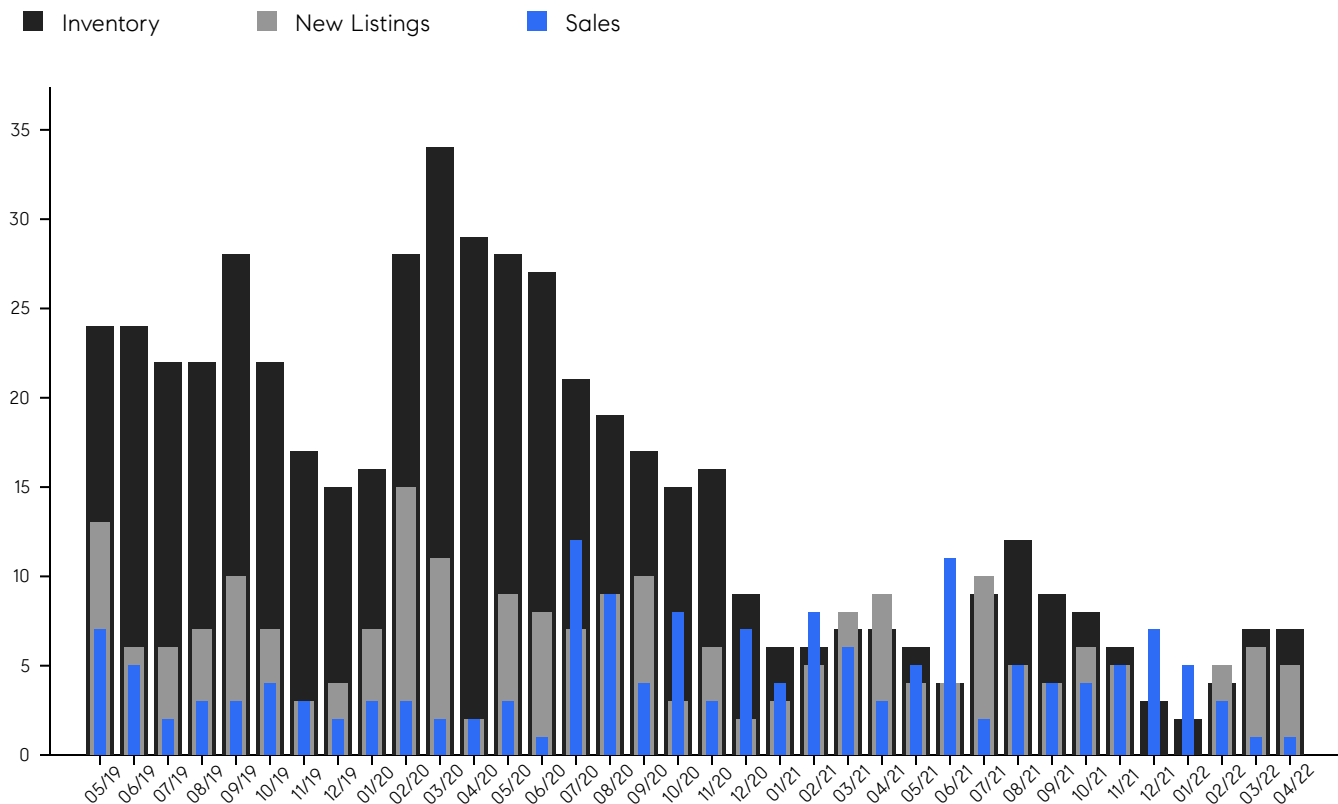
© 2022. Based on information from Garden State MLS, LLC for the period of January 2018 through April 2022. Due to MLS reporting methods and allowable reporting policy, this data is only informational and may not be completely accurate. Data maintained by the MLS may not reflect all real estate activity in the market.

# Martinsville

APRIL 2022

## Inventory, New Listings & Sales

This last view of the market combines monthly inventory of properties for sale along with new listings and sales. The graph shows the basic annual seasonality of the market, as well as the relationship between these items. The number of new listings in April 2022 was 5, a change of -17% from 6 last month and -44% from 9 in April 2021.



© 2022. Based on information from Garden State MLS, LLC for the period of January 2018 through April 2022. Due to MLS reporting methods and allowable reporting policy, this data is only informational and may not be completely accurate. Data maintained by the MLS may not reflect all real estate activity in the market.

## Martinsville

APRIL 2022

MONTH	# OF SALES	3-MO AVG	MEDIAN SALE PRICE	3-MO AVG	AVERAGE SALE PRICE	3-MO AVG	DAYS ON MARKET	3-MO AVG	AVERAGE PPSF	3-MO AVG	SALE /LIST	3-MO AVG	INV	NEW LISTINGS	MSI
Apr '22	1	2	\$500K	\$545K	\$500K	\$532K	21	27	\$0	\$93	91.1%	98.4%	7	5	7.0
Mar '22	1	3	\$650K	\$583K	\$650K	\$600K	11	31	\$0	\$202	109.2%	100.9%	7	6	7.0
Feb '22	3	5	\$485K	\$617K	\$446K	\$659K	49	41	\$280	\$275	95.0%	98.2%	4	5	1.3
Jan '22	5	6	\$615K	\$580K	\$704K	\$643K	33	42	\$327	\$182	98.5%	97.6%	2	0	0.4
Dec '21	7	5	\$750K	\$594K	\$826K	\$666K	40	36	\$219	\$168	101.1%	100.7%	3	0	0.4
Nov '21	5	4	\$375K	\$526K	\$398K	\$583K	52	32	\$0	\$192	93.3%	102.0%	6	5	1.2
Oct '21	4	4	\$656K	\$620K	\$774K	\$680K	17	20	\$286	\$272	107.8%	106.3%	8	6	2.0
Sep '21	4	4	\$547K	\$839K	\$576K	\$860K	28	39	\$291	\$254	105.0%	105.3%	9	4	2.3
Aug '21	5	6	\$655K	\$860K	\$690K	\$880K	15	34	\$239	\$239	106.1%	104.1%	12	5	2.4
Jul '21	2	6	\$1.3M	\$867K	\$1.3M	\$884K	73	34	\$232	\$257	104.7%	103.5%	9	10	4.5
Jun '21	11	6	\$610K	\$612K	\$634K	\$656K	14	15	\$246	\$267	101.4%	101.7%	4	4	0.4
May '21	5	5	\$675K	\$641K	\$701K	\$694K	16	25	\$293	\$261	104.3%	100.7%	6	4	1.2
Apr '21	3	6	\$550K	\$677K	\$633K	\$711K	15	50	\$263	\$242	99.2%	98.4%	7	9	2.3
Mar '21	6	6	\$698K	\$666K	\$748K	\$676K	45	78	\$226	\$215	98.7%	98.1%	7	8	1.2
Feb '21	8	6	\$781K	\$632K	\$750K	\$633K	89	78	\$236	\$228	97.2%	98.3%	6	5	0.8
Jan '21	4	5	\$519K	\$558K	\$530K	\$564K	100	79	\$182	\$222	98.3%	98.5%	6	3	1.5
Dec '20	7	6	\$594K	\$558K	\$618K	\$582K	44	57	\$267	\$239	99.3%	98.2%	9	2	1.3
Nov '20	3	5	\$560K	\$551K	\$544K	\$558K	93	58	\$217	\$231	97.8%	98.1%	16	6	5.3
Oct '20	8	7	\$519K	\$539K	\$584K	\$567K	34	46	\$234	\$245	97.4%	98.0%	15	3	1.9
Sep '20	4	8	\$572K	\$561K	\$546K	\$584K	47	73	\$242	\$239	99.0%	97.9%	17	10	4.3
Aug '20	9	7	\$525K	\$520K	\$571K	\$552K	56	71	\$259	\$241	97.5%	97.0%	19	9	2.1
Jul '20	12	5	\$584K	\$580K	\$634K	\$614K	116	61	\$217	\$228	97.1%	97.4%	21	7	1.8
Jun '20	1	2	\$450K	\$569K	\$450K	\$587K	42	40	\$246	\$234	96.6%	97.0%	27	8	27.0
May '20	3	2	\$705K	\$613K	\$758K	\$630K	26	67	\$222	\$217	98.5%	95.3%	28	9	9.3
Apr '20	2	2	\$552K	\$555K	\$552K	\$542K	51	68	\$235	\$215	96.1%	93.9%	29	2	14.5
Mar '20	2	3	\$580K	\$600K	\$580K	\$611K	125	86	\$194	\$202	91.2%	93.6%	34	11	17.0
Feb '20	3	3	\$533K	\$565K	\$494K	\$576K	29	48	\$215	\$244	94.3%	95.1%	28	15	9.3
Jan '20	3	3	\$685K	\$570K	\$758K	\$594K	103	58	\$197	\$260	95.2%	95.7%	16	7	5.3
Dec '19	2	3	\$475K	\$595K	\$475K	\$565K	13	28	\$319	\$274	95.8%	96.7%	15	4	7.5
Nov '19	3	3	\$550K	\$640K	\$550K	\$657K	57	49	\$264	\$253	96.2%	97.6%	17	3	5.7
Oct '19	4	3	\$758K	\$647K	\$669K	\$629K	15	51	\$239	\$239	98.2%	96.9%	22	7	5.5
Sep '19	3	3	\$610K	\$665K	\$752K	\$677K	74	71	\$255	\$230	98.3%	95.8%	28	10	9.3
Aug '19	3	3	\$572K	\$727K	\$464K	\$687K	63	74	\$222	\$231	94.2%	95.7%	22	7	7.3
Jul '19	2	5	\$812K	\$706K	\$812K	\$704K	75	61	\$212	\$237	94.8%	96.3%	22	6	11.0
Jun '19	5	5	\$795K	\$635K	\$782K	\$604K	84	53	\$260	\$237	98.0%	96.5%	24	6	4.8
May '19	7	5	\$510K	\$523K	\$515K	\$554K	24	59	\$238	\$224	96.0%	95.8%	24	13	3.4

© 2022. Based on information from Garden State MLS, LLC for the period of January 2018 through April 2022. Due to MLS reporting methods and allowable reporting policy, this data is only informational and may not be completely accurate. Data maintained by the MLS may not reflect all real estate activity in the market.



CHERIE  
BERGER  
TEAM



**Cherie Berger**

cherie.berger@compass.com

M: 908.410.0931



**Steven Berger**

steven.berger@compass.com

M: 908.256.0307



**Ashley Berger-Freitas**

ashley.freitas@compass.com

M: 908.432.9818

Compass makes no representations or warranties, express or implied, with respect to future market conditions or prices of residential product at the time the subject property or any competitive property is complete and ready for occupancy or with respect to any report, study, finding, recommendation or other information provided by Compass herein. Moreover, no warranty, express or implied, is made or should be assumed regarding the accuracy, adequacy, completeness, legality, reliability, merchantability or fitness for a particular purpose of any information, in part or whole, contained herein. All material is presented with the understanding that Compass shall not be deemed to provide legal, accounting or other professional services. This is not intended to solicit the purchase or sale of any property. Any and all such warranties are hereby expressly disclaimed. Equal Housing Opportunity.

© Compass. All Rights Reserved. This information may not be copied, used or distributed without Compass' consent.