



CHERIE
BERGER
TEAM

November 2023

Bridgewater Market Insights

BRIDGEWATER
MARKET INSIGHTS

Market Profile & Trends Overview

The table belows shows data & statistics for November 2023 (CM), and the percentage difference of these metrics compared to data from last month (LM), the last three months (L3M), the same month last year (PYM), the entire last year (LY), prior year (PY), year-to-date (YTD), and the prior year-to-date (PYTD).

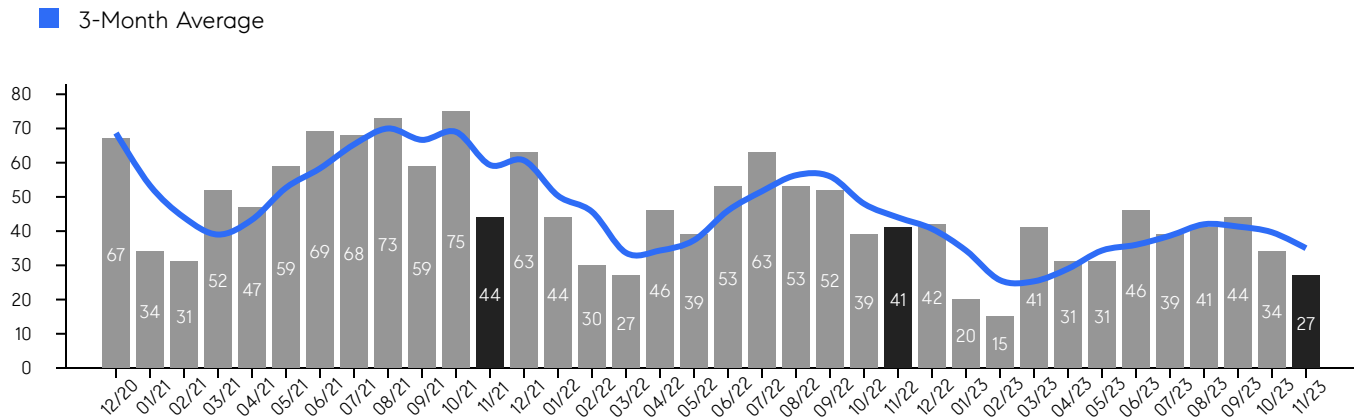
		CM	LM	L3M	PYM	LY	PY	YTD	PYTD
Inventory	# OF PROPERTIES	36	-10%	-21%	-53%	-47%	-48%	-	-
	MEDIAN PRICE	\$614,500	-5%	-4%	-10%	-2%	15%	-	-
	AVERAGE PRICE	\$682,122	-14%	-12%	-12%	-5%	13%	-	-
	PRICE PER SQFT	\$343	4%	6%	12%	17%	-97%	-	-
	MONTHS OF SUPPLY	1.3	13%	16%	-29%	-25%	6%	-	-
New Listings	# OF PROPERTIES	31	-9%	-18%	-28%	-40%	-51%	432	-42.1%
	MEDIAN PRICE	\$499,900	-17%	-16%	-22%	-12%	-6%	\$589,450	14.5%
	AVERAGE PRICE	\$598,184	-10%	-7%	-17%	-4%	8%	\$632,428	14.2%
	PRICE PER SQFT	\$330	9%	16%	12%	16%	-84%	\$291	-86.8%
Sales	# OF PROPERTIES	27	-21%	-32%	-34%	-39%	-52%	369	-39.6%
	MEDIAN PRICE	\$645,000	17%	0%	19%	16%	24%	\$610,000	15.7%
	AVERAGE PRICE	\$723,811	20%	8%	23%	23%	34%	\$652,226	19.5%
	PRICE PER SQFT	\$287	-6%	-5%	5%	4%	13%	\$300	18.6%
	SALE-TO-LIST RATIO	104.5%	0.1%	1%	2.3%	1.4%	3.0%	103.6%	1.9%

Bridgewater

NOVEMBER 2023

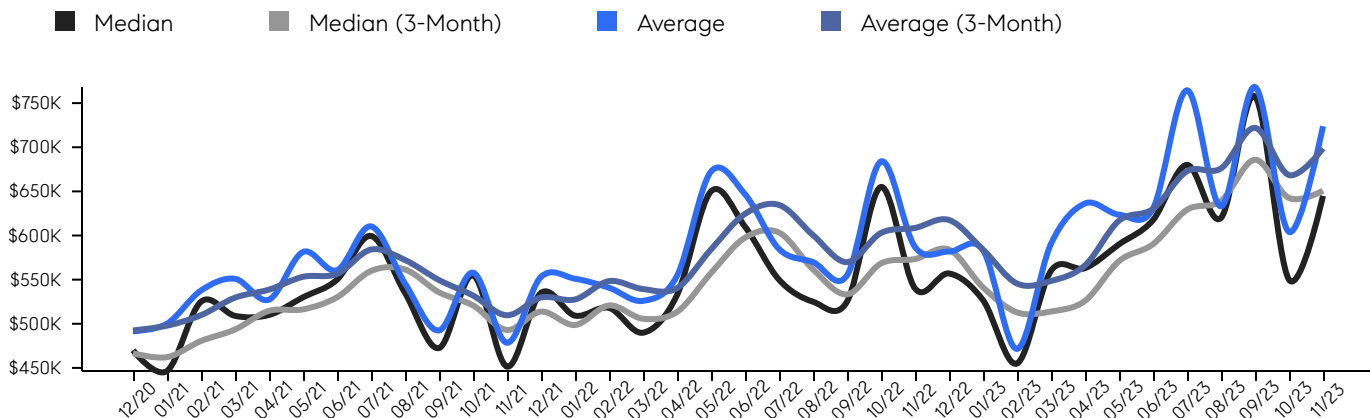
Property Sales

There were 27 sales in November 2023, a change of -34% from 41 in November 2022 and -21% from the 34 sales last month. Compared to November 2021 and 2022, sales were at their lowest level. There have been 369 year-to-date (YTD) sales, which is -39.6% lower than last year's year-to-date sales of 611.



Property Prices

The median sales price in November 2023 was \$645,000, a change of 19% from \$540,000 in November 2022, and a change of 17% from \$550,000 last month. The average sales price in November 2023 was \$723,811, a change of 23% from \$587,024 in November 2022, and a change of 20% from \$604,076 last month, and was at its highest level compared to 2022 and 2021.



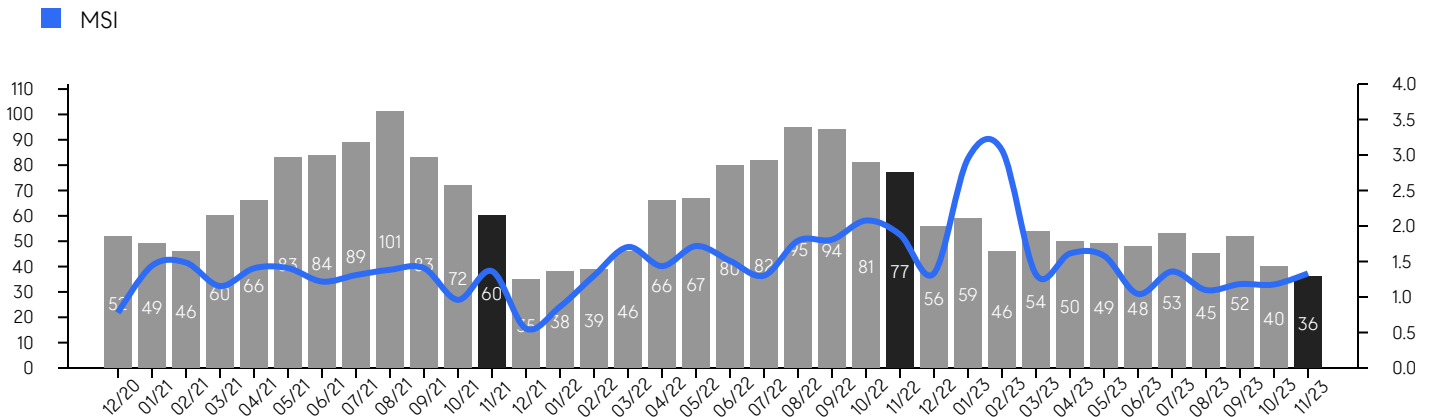
© 2023. Based on information from Garden State MLS, LLC for the period of January 2018 through November 2023. Due to MLS reporting methods and allowable reporting policy, this data is only informational and may not be completely accurate. Data maintained by the MLS may not reflect all real estate activity in the market.

Bridgewater

NOVEMBER 2023

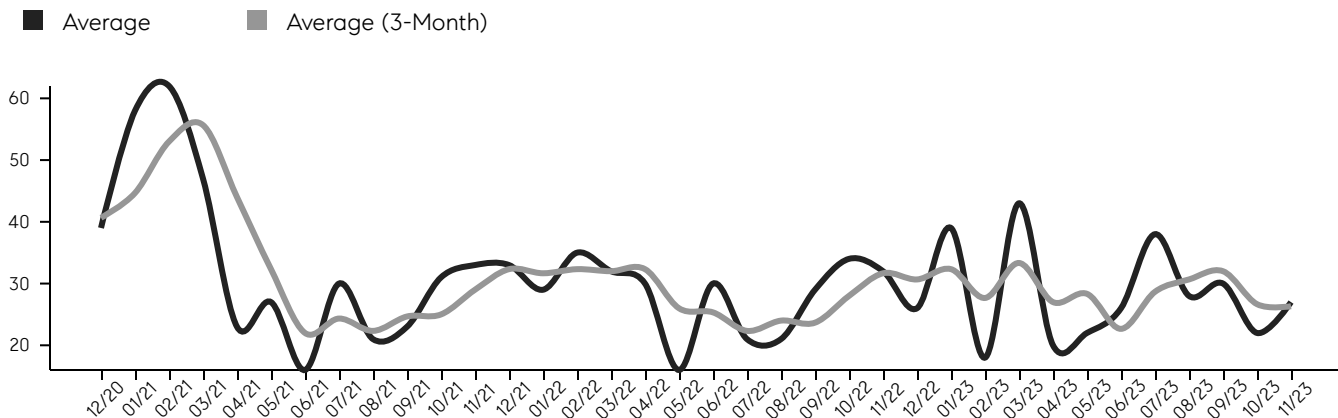
Inventory & MSI

The total inventory of properties available for sale as of November 2023 was 36, a difference of -10% from last month, and -53% from 77 in November 2022, and was at its lowest level compared to 2022 and 2021. The months of supply inventory (MSI) was at 1.3 months, a similar level compared to 2022 and 2021. A comparatively lower MSI benefits sellers, while a higher MSI benefits buyers.



Market Time

The average days on market (DOM) shows the number of days the average property is on the market before selling. An upward trend tends to indicate a move towards a buyer's market, while a downward trend tends to indicate a move to a seller's market. The DOM for November 2023 was 27, a change of 23% from 22 days last month, and -16% from 32 days in November 2022, and was at its lowest level compared to 2022 and 2021.



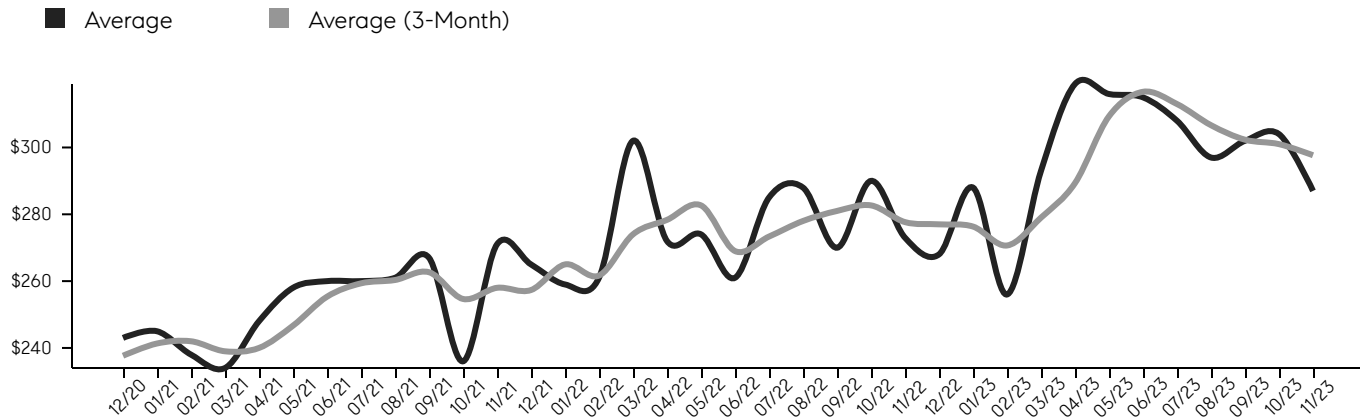
© 2023. Based on information from Garden State MLS, LLC for the period of January 2018 through November 2023. Due to MLS reporting methods and allowable reporting policy, this data is only informational and may not be completely accurate. Data maintained by the MLS may not reflect all real estate activity in the market.

Bridgewater

NOVEMBER 2023

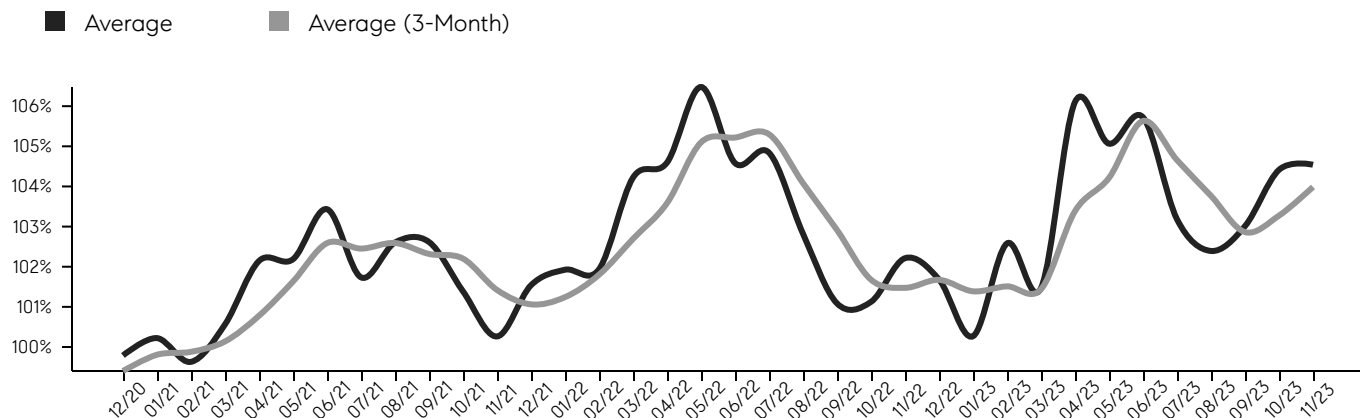
Selling Price Per Square Foot

The selling price per square foot (PPSF) is a great indicator for the direction of property values. Since median & average sales prices can be impacted by the "mix" of high or low end properties in the market, the selling price per square foot is a more normalized indicator on the direction of property values.



Selling Price vs. Listing Price

The selling price vs. listing price reveals the average amount that sellers are agreeing to come down from their list price. The lower the ratio is below 100%, the more of a buyer's market exists, while a ratio at or above 100% indicates more of a seller's market. The November 2023 selling price vs. listing price ratio was 104.5%, compared to 104.4% last month, and 102.2% in November 2022.



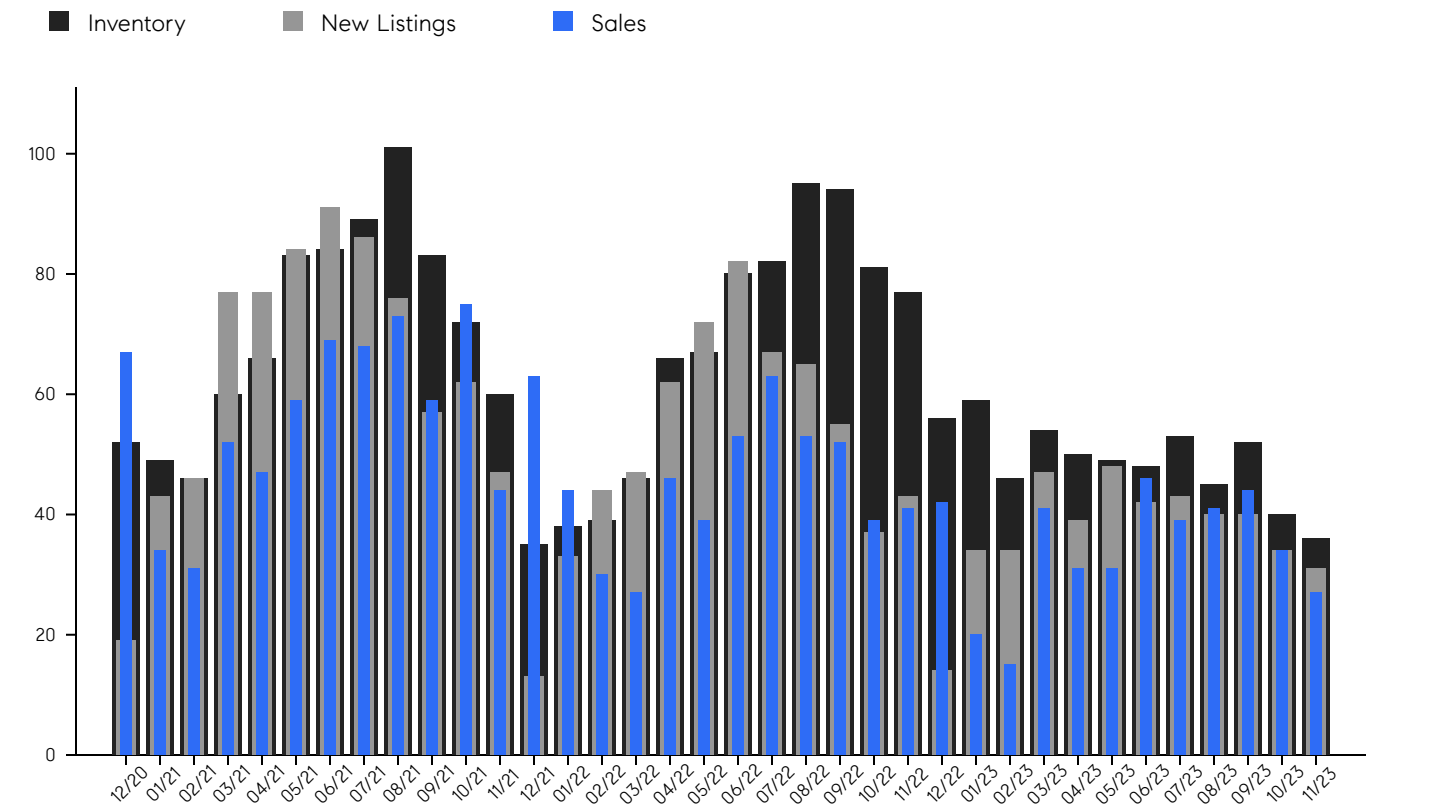
© 2023. Based on information from Garden State MLS, LLC for the period of January 2018 through November 2023. Due to MLS reporting methods and allowable reporting policy, this data is only informational and may not be completely accurate. Data maintained by the MLS may not reflect all real estate activity in the market.

Bridgewater

NOVEMBER 2023

Inventory, New Listings & Sales

This last view of the market combines monthly inventory of properties for sale along with new listings and sales. The graph shows the basic annual seasonality of the market, as well as the relationship between these items. The number of new listings in November 2023 was 31, a change of -9% from 34 last month and -28% from 43 in November 2022.



© 2023. Based on information from Garden State MLS, LLC for the period of January 2018 through November 2023. Due to MLS reporting methods and allowable reporting policy, this data is only informational and may not be completely accurate. Data maintained by the MLS may not reflect all real estate activity in the market.

Bridgewater

NOVEMBER 2023

MONTH	# OF SALES	3-MO AVG	MEDIAN SALE PRICE	3-MO AVG	AVERAGE SALE PRICE	3-MO AVG	DAYS ON MARKET	3-MO AVG	AVERAGE PPSF	3-MO AVG	SALE /LIST	3-MO AVG	INV	NEW LISTINGS	MSI
Nov '23	27	35	\$645K	\$651K	\$723K	\$699K	27	26	\$287	\$298	104.5%	104.0%	36	31	1.3
Oct '23	34	40	\$550K	\$643K	\$604K	\$668K	22	27	\$304	\$301	104.4%	103.3%	40	34	1.2
Sep '23	44	41	\$757K	\$686K	\$768K	\$722K	30	32	\$302	\$302	103.0%	102.9%	52	40	1.2
Aug '23	41	42	\$620K	\$639K	\$633K	\$676K	28	31	\$297	\$307	102.4%	103.8%	45	40	1.1
Jul '23	39	39	\$680K	\$629K	\$764K	\$673K	38	29	\$308	\$313	103.2%	104.7%	53	43	1.4
Jun '23	46	36	\$617K	\$590K	\$630K	\$630K	26	23	\$315	\$317	105.7%	105.6%	48	42	1.0
May '23	31	34	\$590K	\$571K	\$623K	\$617K	22	28	\$316	\$309	105.1%	104.2%	49	48	1.6
Apr '23	31	29	\$563K	\$526K	\$636K	\$566K	20	27	\$319	\$289	106.1%	103.4%	50	39	1.6
Mar '23	41	25	\$560K	\$514K	\$590K	\$548K	43	33	\$293	\$279	101.5%	101.4%	54	47	1.3
Feb '23	15	26	\$455K	\$513K	\$471K	\$546K	18	28	\$256	\$271	102.6%	101.5%	46	34	3.1
Jan '23	20	34	\$526K	\$541K	\$583K	\$584K	39	32	\$288	\$276	100.3%	101.4%	59	34	3.0
Dec '22	42	41	\$557K	\$584K	\$581K	\$618K	26	31	\$268	\$277	101.7%	101.7%	56	14	1.3
Nov '22	41	44	\$540K	\$573K	\$587K	\$609K	32	32	\$273	\$278	102.2%	101.5%	77	43	1.9
Oct '22	39	48	\$655K	\$568K	\$683K	\$603K	34	28	\$290	\$283	101.1%	101.7%	81	37	2.1
Sep '22	52	56	\$525K	\$533K	\$554K	\$570K	29	24	\$270	\$281	101.1%	102.9%	94	55	1.8
Aug '22	53	56	\$525K	\$562K	\$569K	\$600K	21	24	\$288	\$278	102.8%	104.1%	95	65	1.8
Jul '22	63	52	\$550K	\$603K	\$584K	\$635K	21	22	\$285	\$273	104.8%	105.3%	82	67	1.3
Jun '22	53	46	\$610K	\$598K	\$646K	\$624K	30	25	\$261	\$269	104.6%	105.2%	80	82	1.5
May '22	39	37	\$650K	\$557K	\$672K	\$584K	16	26	\$274	\$283	106.5%	105.1%	67	72	1.7
Apr '22	46	34	\$532K	\$513K	\$554K	\$540K	30	32	\$272	\$278	104.6%	103.6%	66	62	1.4
Mar '22	27	34	\$489K	\$506K	\$525K	\$539K	32	32	\$302	\$274	104.2%	102.7%	46	47	1.7
Feb '22	30	46	\$518K	\$521K	\$540K	\$548K	35	32	\$261	\$262	101.9%	101.8%	39	44	1.3
Jan '22	44	50	\$509K	\$499K	\$551K	\$528K	29	32	\$259	\$265	101.9%	101.2%	38	33	0.9
Dec '21	63	61	\$535K	\$514K	\$553K	\$530K	33	32	\$265	\$257	101.5%	101.1%	35	13	0.6
Nov '21	44	59	\$451K	\$493K	\$478K	\$510K	33	29	\$271	\$258	100.3%	101.4%	60	47	1.4
Oct '21	75	69	\$555K	\$521K	\$557K	\$532K	31	25	\$236	\$255	101.4%	102.2%	72	62	1.0
Sep '21	59	67	\$472K	\$536K	\$492K	\$550K	23	25	\$267	\$263	102.6%	102.3%	83	57	1.4
Aug '21	73	70	\$535K	\$562K	\$545K	\$572K	21	22	\$261	\$260	102.6%	102.6%	101	76	1.4
Jul '21	68	65	\$599K	\$560K	\$610K	\$584K	30	24	\$260	\$259	101.7%	102.5%	89	86	1.3
Jun '21	69	58	\$550K	\$530K	\$560K	\$556K	16	22	\$260	\$255	103.4%	102.6%	84	91	1.2
May '21	59	53	\$530K	\$516K	\$581K	\$553K	27	32	\$258	\$247	102.2%	101.6%	83	84	1.4
Apr '21	47	43	\$510K	\$515K	\$527K	\$539K	23	44	\$248	\$240	102.1%	100.8%	66	77	1.4
Mar '21	52	39	\$509K	\$494K	\$550K	\$530K	47	56	\$234	\$239	100.6%	100.1%	60	77	1.2
Feb '21	31	44	\$525K	\$481K	\$537K	\$510K	62	53	\$238	\$242	99.6%	99.9%	46	46	1.5
Jan '21	34	53	\$446K	\$462K	\$500K	\$498K	58	45	\$245	\$241	100.2%	99.8%	49	43	1.4
Dec '20	67	69	\$470K	\$466K	\$491K	\$492K	39	41	\$243	\$238	99.8%	99.4%	52	19	0.8

© 2023. Based on information from Garden State MLS, LLC for the period of January 2018 through November 2023. Due to MLS reporting methods and allowable reporting policy, this data is only informational and may not be completely accurate. Data maintained by the MLS may not reflect all real estate activity in the market.



CHERIE
BERGER
TEAM



Cherie Berger

cherie.berger@compass.com

M: 908.410.0931



Steven Berger

steven.berger@compass.com

M: 908.256.0307



Ashley Berger-Freitas

ashley.freitas@compass.com

M: 908.432.9818



Karla Gary

karla.gary@compass.com

M: 908.285.3813

Compass makes no representations or warranties, express or implied, with respect to future market conditions or prices of residential product at the time the subject property or any competitive property is complete and ready for occupancy or with respect to any report, study, finding, recommendation or other information provided by Compass herein. Moreover, no warranty, express or implied, is made or should be assumed regarding the accuracy, adequacy, completeness, legality, reliability, merchantability or fitness for a particular purpose of any information, in part or whole, contained herein. All material is presented with the understanding that Compass shall not be deemed to provide legal, accounting or other professional services. This is not intended to solicit the purchase or sale of any property. Any and all such warranties are hereby expressly disclaimed. Equal Housing Opportunity.

© Compass. All Rights Reserved. This information may not be copied, used or distributed without Compass' consent.