



CHERIE  
BERGER  
TEAM

September 2025

# Bridgewater Market Insights

BRIDGEWATER  
MARKET INSIGHTS

## Market Profile & Trends Overview

The table belows shows data & statistics for September 2025 (CM), and the percentage difference of these metrics compared to data from last month (LM), the last three months (L3M), the same month last year (PYM), the entire last year (LY), prior year (PY), year-to-date (YTD), and the prior year-to-date (PYTD).

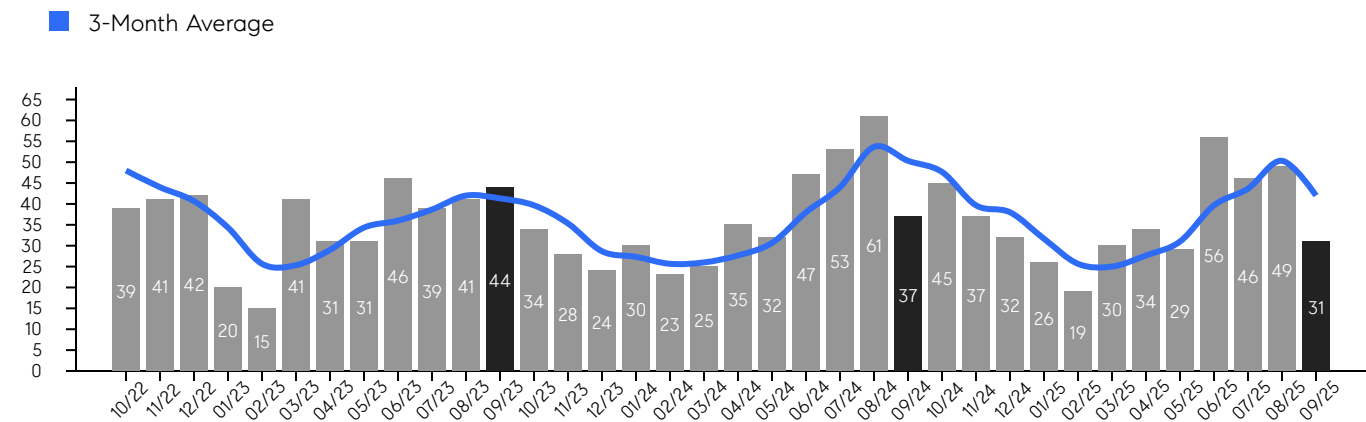
		CM	LM	L3M	PYM	LY	PY	YTD	PYTD
Inventory	# OF PROPERTIES	79	4%	-2%	34%	45%	66%	-	-
	MEDIAN PRICE	\$699,900	0%	-2%	-3%	7%	7%	-	-
	AVERAGE PRICE	\$795,406	-3%	-2%	-5%	5%	3%	-	-
	PRICE PER SQFT	\$338	-3%	-4%	-3%	2%	3%	-	-
	MONTHS OF SUPPLY	2.5	64%	58%	60%	-7%	60%	-	-
New Listings	# OF PROPERTIES	60	43%	13%	18%	39%	57%	463	26.2%
	MEDIAN PRICE	\$645,000	8%	-1%	-14%	-3%	11%	\$685,000	17.1%
	AVERAGE PRICE	\$686,838	0%	-4%	-16%	-5%	10%	\$742,478	17.4%
	PRICE PER SQFT	\$313	-7%	-6%	-6%	-4%	7%	\$332	15.7%
Sales	# OF PROPERTIES	31	-37%	-38%	-16%	-19%	-6%	320	3.9%
	MEDIAN PRICE	\$660,000	3%	-5%	-9%	-1%	10%	\$700,000	13.8%
	AVERAGE PRICE	\$731,786	5%	-2%	0%	3%	14%	\$733,729	12.7%
	PRICE PER SQFT	\$331	-5%	-4%	-1%	3%	10%	\$342	13.6%
	SALE-TO-LIST RATIO	101.7%	-0.2%	-2%	-3.6%	-2.6%	-1.8%	103.8%	0.4%

# Bridgewater

SEPTEMBER 2025

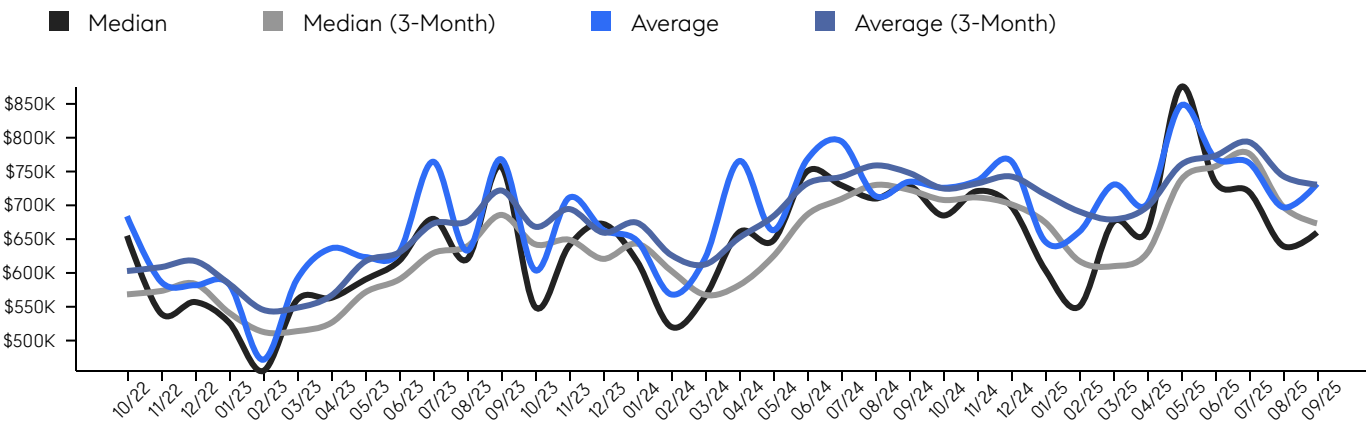
## Property Sales

There were 31 sales in September 2025, a change of -16% from 37 in September 2024 and -37% from the 49 sales last month. Compared to September 2023 and 2024, sales were at their lowest level. There have been 320 year-to-date (YTD) sales, which is 3.9% higher than last year's year-to-date sales of 308.



## Property Prices

The median sales price in September 2025 was \$660,000, a change of -9% from \$729,000 in September 2024, and a change of 3% from \$640,000 last month. The average sales price in September 2025 was \$731,786, a change of 0% from \$734,843 in September 2024, and a change of 5% from \$697,142 last month, and was at its lowest level compared to 2024 and 2023.



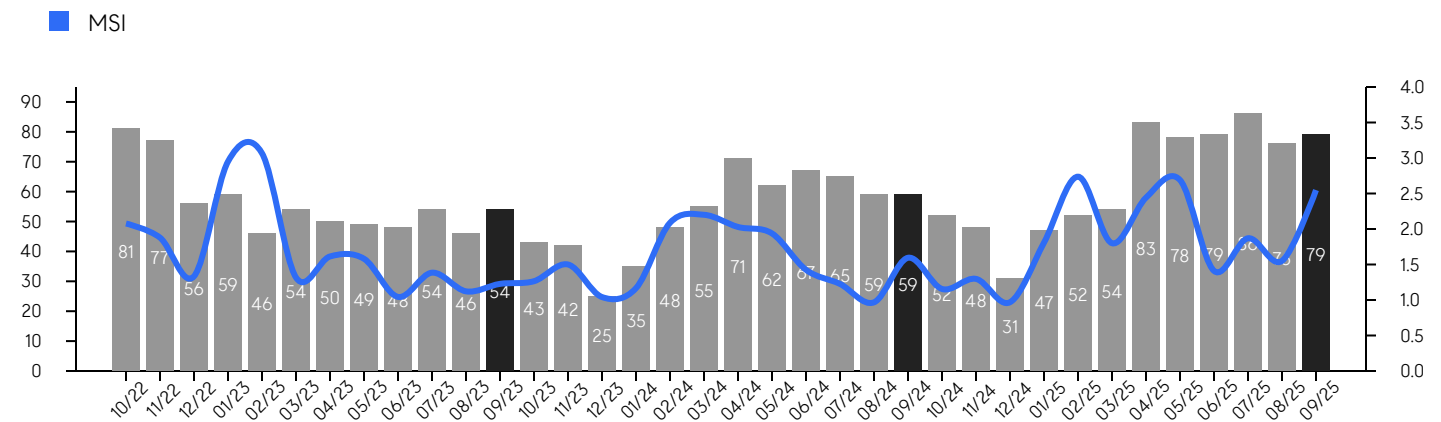
© 2025. Based on information from Garden State MLS, LLC for the period of January 2018 through September 2025. Due to MLS reporting methods and allowable reporting policy, this data is only informational and may not be completely accurate. Data maintained by the MLS may not reflect all real estate activity in the market.

# Bridgewater

SEPTEMBER 2025

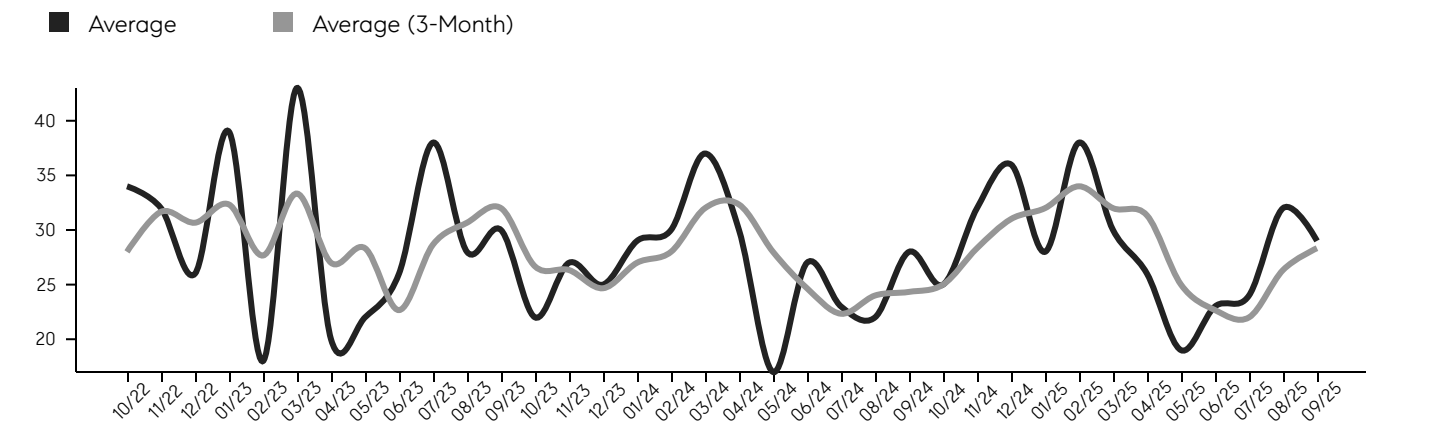
## Inventory & MSI

The total inventory of properties available for sale as of September 2025 was 79, a difference of 4% from - last month, and 34% from 59 in September 2024, and was at its highest level compared to 2024 and 2023. The months of supply inventory (MSI) was at 2.5 months, a similar level compared to 2024 and 2023. A comparatively lower MSI benefits sellers, while a higher MSI benefits buyers.



## Market Time

The average days on market (DOM) shows the number of days the average property is on the market before selling. An upward trend tends to indicate a move towards a buyer's market, while a downward trend tends to indicate a move to a seller's market. The DOM for September 2025 was 29, a change of -9% from 32 days last month, and 4% from 28 days in September 2024, and was at its lowest level compared to 2024 and 2023.



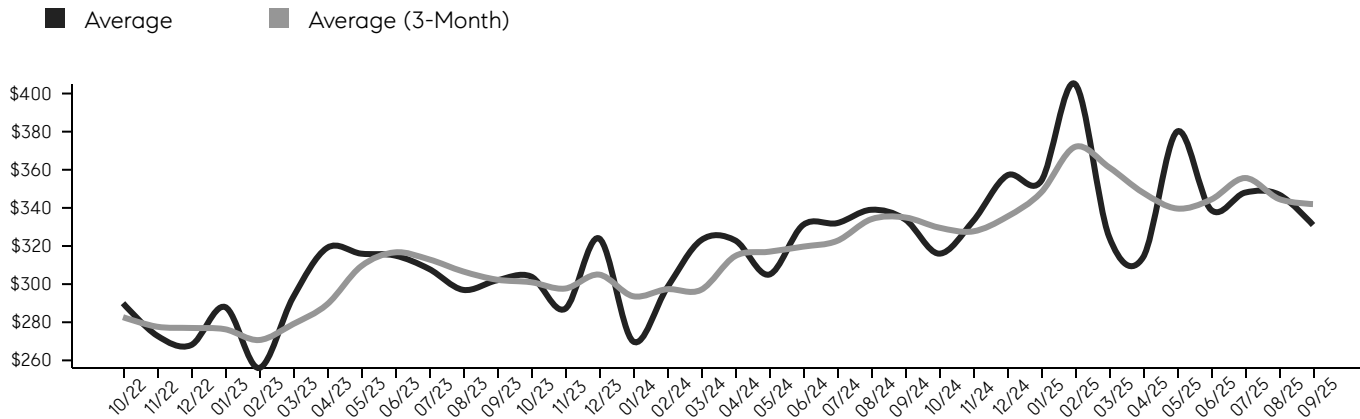
© 2025. Based on information from Garden State MLS, LLC for the period of January 2018 through September 2025. Due to MLS reporting methods and allowable reporting policy, this data is only informational and may not be completely accurate. Data maintained by the MLS may not reflect all real estate activity in the market.

# Bridgewater

SEPTEMBER 2025

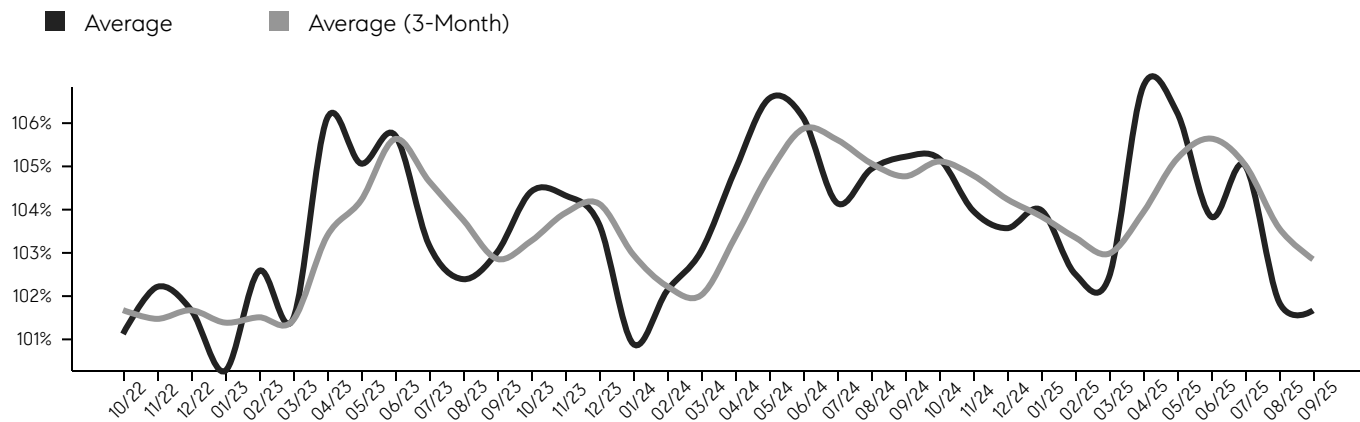
## Selling Price Per Square Foot

The selling price per square foot (PPSF) is a great indicator for the direction of property values. Since median & average sales prices can be impacted by the "mix" of high or low end properties in the market, the selling price per square foot is a more normalized indicator on the direction of property values.



## Selling Price vs. Listing Price

The selling price vs. listing price reveals the average amount that sellers are agreeing to come down from their list price. The lower the ratio is below 100%, the more of a buyer's market exists, while a ratio at or above 100% indicates more of a seller's market. The September 2025 selling price vs. listing price ratio was 101.7%, compared to 101.9% last month, and 105.2% in September 2024.



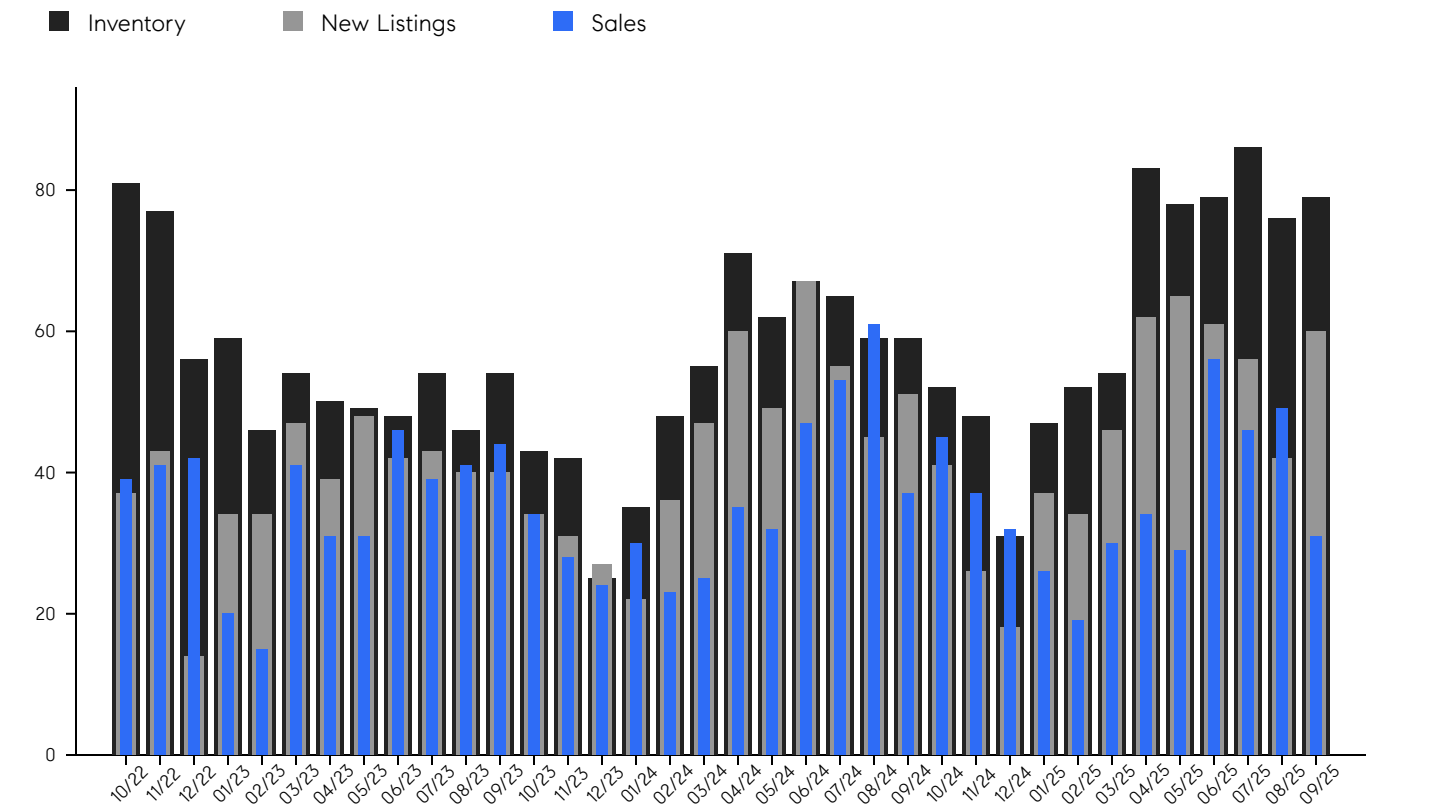
© 2025. Based on information from Garden State MLS, LLC for the period of January 2018 through September 2025. Due to MLS reporting methods and allowable reporting policy, this data is only informational and may not be completely accurate. Data maintained by the MLS may not reflect all real estate activity in the market.

# Bridgewater

SEPTEMBER 2025

## Inventory, New Listings & Sales

This last view of the market combines monthly inventory of properties for sale along with new listings and sales. The graph shows the basic annual seasonality of the market, as well as the relationship between these items. The number of new listings in September 2025 was 60, a change of 43% from 42 last month and 18% from 51 in September 2024.



© 2025. Based on information from Garden State MLS, LLC for the period of January 2018 through September 2025. Due to MLS reporting methods and allowable reporting policy, this data is only informational and may not be completely accurate. Data maintained by the MLS may not reflect all real estate activity in the market.

# Bridgewater

SEPTEMBER 2025

MONTH	# OF SALES	3-MO AVG	MEDIAN SALE PRICE	3-MO AVG	AVERAGE SALE PRICE	3-MO AVG	DAYS ON MARKET	3-MO AVG	AVERAGE PPSF	3-MO AVG	SALE /LIST	3-MO AVG	INV	NEW LISTINGS	MSI
Sep '25	31	42	\$660K	\$673K	\$731K	\$731K	29	28	\$331	\$342	101.7%	102.9%	79	60	2.5
Aug '25	49	50	\$640K	\$698K	\$697K	\$743K	32	26	\$347	\$345	101.9%	103.6%	76	42	1.6
Jul '25	46	44	\$720K	\$777K	\$763K	\$794K	24	22	\$348	\$356	105.0%	105.0%	86	56	1.9
Jun '25	56	40	\$735K	\$758K	\$770K	\$773K	23	23	\$339	\$344	103.8%	105.6%	79	61	1.4
May '25	29	31	\$875K	\$738K	\$847K	\$760K	19	25	\$380	\$340	106.2%	105.2%	78	65	2.7
Apr '25	34	28	\$662K	\$629K	\$701K	\$698K	26	31	\$314	\$348	106.8%	103.9%	83	62	2.4
Mar '25	30	25	\$675K	\$610K	\$730K	\$679K	30	32	\$325	\$361	102.4%	103.0%	54	46	1.8
Feb '25	19	26	\$550K	\$618K	\$660K	\$691K	38	34	\$405	\$372	102.5%	103.4%	52	34	2.7
Jan '25	26	32	\$605K	\$675K	\$646K	\$716K	28	32	\$354	\$348	104.0%	103.8%	47	37	1.8
Dec '24	32	38	\$699K	\$702K	\$765K	\$743K	36	31	\$357	\$335	103.6%	104.2%	31	18	1.0
Nov '24	37	40	\$721K	\$712K	\$736K	\$732K	32	28	\$333	\$328	104.0%	104.8%	48	26	1.3
Oct '24	45	48	\$685K	\$708K	\$725K	\$725K	25	25	\$316	\$330	105.2%	105.1%	52	41	1.2
Sep '24	37	50	\$729K	\$723K	\$734K	\$748K	28	24	\$334	\$335	105.2%	104.8%	59	51	1.6
Aug '24	61	54	\$710K	\$730K	\$714K	\$759K	22	24	\$339	\$334	104.9%	105.1%	59	45	1.0
Jul '24	53	44	\$730K	\$709K	\$795K	\$742K	23	22	\$332	\$323	104.2%	105.6%	65	55	1.2
Jun '24	47	38	\$750K	\$686K	\$767K	\$732K	27	25	\$331	\$320	106.1%	105.9%	67	67	1.4
May '24	32	31	\$647K	\$624K	\$663K	\$683K	17	28	\$305	\$317	106.6%	104.8%	62	49	1.9
Apr '24	35	28	\$660K	\$582K	\$765K	\$652K	30	32	\$323	\$315	104.9%	103.4%	71	60	2.0
Mar '24	25	26	\$565K	\$568K	\$621K	\$613K	37	32	\$323	\$297	103.0%	102.0%	55	47	2.2
Feb '24	23	26	\$520K	\$604K	\$568K	\$627K	30	28	\$298	\$297	102.1%	102.2%	48	36	2.1
Jan '24	30	27	\$617K	\$643K	\$647K	\$674K	29	27	\$270	\$294	100.9%	103.0%	35	22	1.2
Dec '23	24	29	\$672K	\$621K	\$663K	\$660K	25	25	\$324	\$305	103.7%	104.1%	25	27	1.0
Nov '23	28	35	\$640K	\$649K	\$711K	\$695K	27	26	\$287	\$298	104.3%	103.9%	42	31	1.5
Oct '23	34	40	\$550K	\$643K	\$604K	\$668K	22	27	\$304	\$301	104.4%	103.3%	43	34	1.3
Sep '23	44	41	\$757K	\$686K	\$768K	\$722K	30	32	\$302	\$302	103.0%	102.9%	54	40	1.2
Aug '23	41	42	\$620K	\$639K	\$633K	\$676K	28	31	\$297	\$307	102.4%	103.8%	46	40	1.1
Jul '23	39	39	\$680K	\$629K	\$764K	\$673K	38	29	\$308	\$313	103.2%	104.7%	54	43	1.4
Jun '23	46	36	\$617K	\$590K	\$630K	\$630K	26	23	\$315	\$317	105.7%	105.6%	48	42	1.0
May '23	31	34	\$590K	\$571K	\$623K	\$617K	22	28	\$316	\$309	105.1%	104.2%	49	48	1.6
Apr '23	31	29	\$563K	\$526K	\$636K	\$566K	20	27	\$319	\$289	106.1%	103.4%	50	39	1.6
Mar '23	41	25	\$560K	\$514K	\$590K	\$548K	43	33	\$293	\$279	101.5%	101.4%	54	47	1.3
Feb '23	15	26	\$455K	\$513K	\$471K	\$546K	18	28	\$256	\$271	102.6%	101.5%	46	34	3.1
Jan '23	20	34	\$526K	\$541K	\$583K	\$584K	39	32	\$288	\$276	100.3%	101.4%	59	34	3.0
Dec '22	42	41	\$557K	\$584K	\$581K	\$618K	26	31	\$268	\$277	101.7%	101.7%	56	14	1.3
Nov '22	41	44	\$540K	\$573K	\$587K	\$609K	32	32	\$273	\$278	102.2%	101.5%	77	43	1.9
Oct '22	39	48	\$655K	\$568K	\$683K	\$603K	34	28	\$290	\$283	101.1%	101.7%	81	37	2.1

© 2025. Based on information from Garden State MLS, LLC for the period of January 2018 through September 2025. Due to MLS reporting methods and allowable reporting policy, this data is only informational and may not be completely accurate. Data maintained by the MLS may not reflect all real estate activity in the market.



CHERIE  
BERGER  
TEAM



**Cherie Berger**

cherie.berger@compass.com

M: 908.410.0931



**Steven Berger**

steven.berger@compass.com

M: 908.256.0307



**Ashley Berger-Freitas**

ashley.freitas@compass.com

M: 908.432.9818



**Karla Gary**

karla.gary@compass.com

M: 908.285.3813



**Josh Grundfest**

josh.grundfest@compass.com

M: 908.698.7665

Compass makes no representations or warranties, express or implied, with respect to future market conditions or prices of residential product at the time the subject property or any competitive property is complete and ready for occupancy or with respect to any report, study, finding, recommendation or other information provided by Compass herein. Moreover, no warranty, express or implied, is made or should be assumed regarding the accuracy, adequacy, completeness, legality, reliability, merchantability or fitness for a particular purpose of any information, in part or whole, contained herein. All material is presented with the understanding that Compass shall not be deemed to provide legal, accounting or other professional services. This is not intended to solicit the purchase or sale of any property. Any and all such warranties are hereby expressly disclaimed. Equal Housing Opportunity.

© Compass. All Rights Reserved. This information may not be copied, used or distributed without Compass' consent.